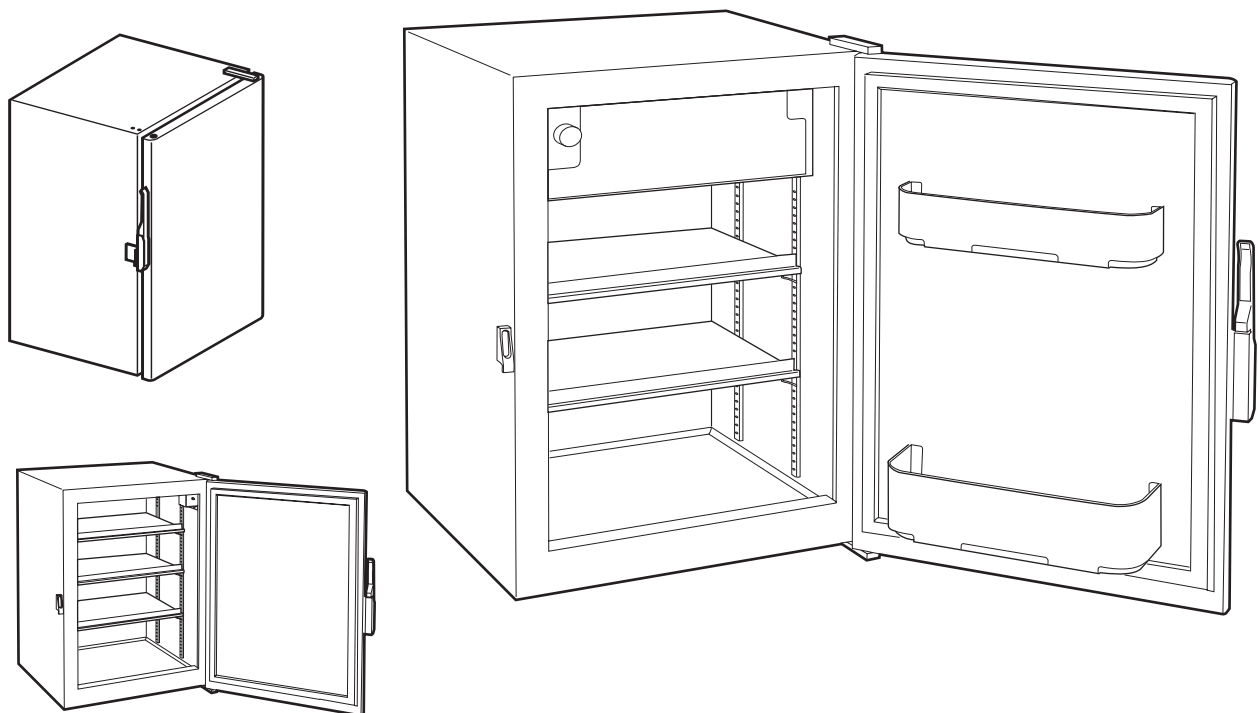




## **STAINLESS STEEL FRIDGES & FREEZERS BOXES MS SERIES**

### INSTALLATION, DIRECTIONS & MAINTENANCE MANUAL



09/06/06



COMPANY  
WITH QUALITY SYSTEM  
CERTIFIED BY DNV  
=ISO 9001/2000=

**veco** S.p.A.



Via Cantore, 6 - 20034 Giussano (MI) ITALY  
Tel. +39 0362.35321 - fax +39 0362.852995  
E-mail: [info@veco.net](mailto:info@veco.net)

**INDEX**

			Page
<b>1</b>	<b>INTRODUCTION</b>		1
	1.1	1.1 Safety	2
<b>2</b>	<b>COMPONENTS TABLE</b>		
	2.1	Components description (with hidden evaporator)	3
	2.2	Components description (with evaporator compartment)	4
	2.3	Components description (accessories for one-unit fridges/freezers)	5
	2.4	Components description (accessories for multiple units)	6
<b>3</b>	<b>INSTALLATION</b>		
	3.1	Doors/hinges	7
	3.2	Doors/handles	8
	3.3	Measures	9-10
	3.4	Condensation outlet	11
	3.5	Multiple measures	12-13
	3.6	Connection to the system / compatibility	14
	3.7	Fridge/freezer - compressor connection	15-16
	3.8	Fastening	17
	3.9	Fastening with frame kit	18
	3.10	Optional external thermostat	19
	3.11	Door with panel	20
<b>4</b>	<b>GOOD FUNCTIONING CHECK</b>		
	4.1	Check	21
<b>5</b>	<b>USE INSTRUCTIONS</b>		
	5.1	Switching on	22
	5.2	Switching off (no use)	22
	5.3	Temperature regulation	22
	5.4	Condensation tray emptying	22
	5.5	Shelves regulation	23
	5.6	Internal thermostat	23
	5.7	Cleaning	23
<b>6</b>	<b>PERIODICAL MAINTENANCE</b>		
	6.1	Defrosting	24
	6.2	Outlet check	24
	6.3	Electrical system	24
	6.4	Seals check	24
	6.5	Handle check	25
	6.6	Hinges check	25
<b>7</b>	<b>FOODS PRESERVATION AND PLACING</b>		
	7.1	Foods preservation and placing	26
<b>8</b>	<b>TROUBLESHOOTING</b>		
	8.1	Troubleshooting	27

## 1. INTRODUCTION

### 1.1 Safety

Before installing the fridge it is necessary to read with great attention these instructions.

When the fridge is operating, it is better to avoid touching the freezer compartment internal surfaces, above all with wet hands: the skin could adhere to the frozen surfaces.  
Switch off the fridge to clean it or to change the light bulb or the thermostat.

Never put full glass containers in the freezer: they could break because of the expansion due to the foods freezing.

Use precautions for children:

Don't let children play with fridges/freezers, since the fridges/freezers doors don't open from inside.

Once thawed, the food must be eaten as soon as possible.

Preserve the deep-frozen packaged foods according to the producer's instructions.

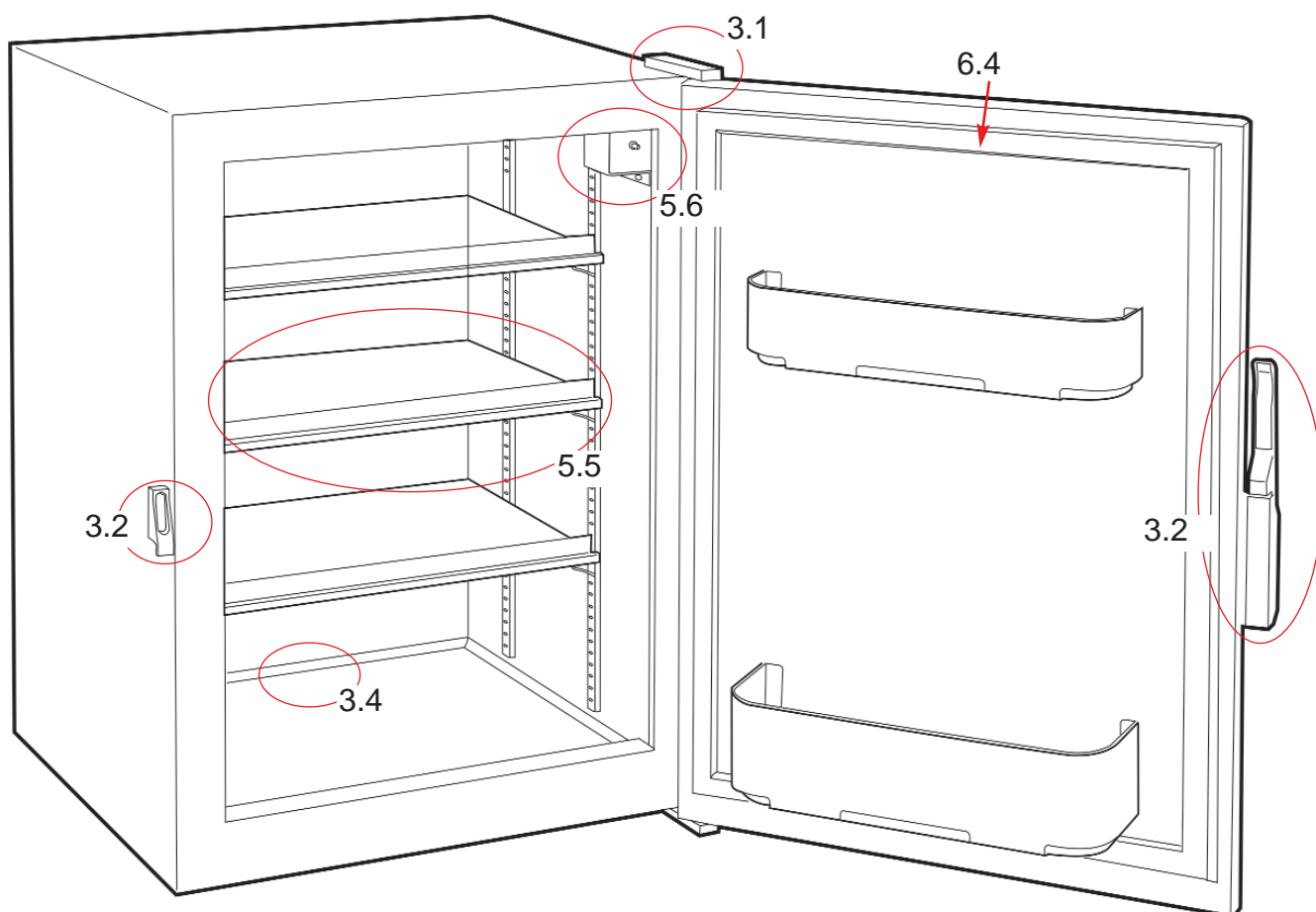
Don't speed up the defrosting through heating electrical fittings or through chemical substances.

If you want to scrap the fridge/freezer, cut off the supply cables and dismount the door so that children can't remained trapped inside.

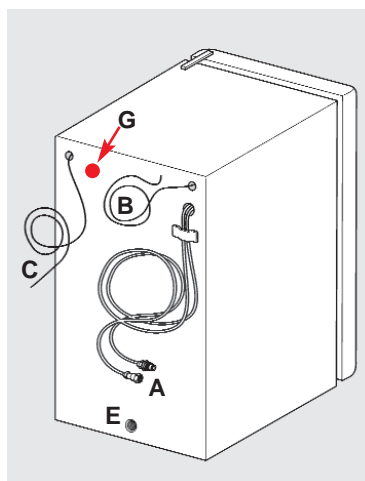
For your safety and for the good preservation of the food inside, keep the precautionary measures in this manual, since the producer is not responsible for damages due to their non-observance.

## 2. COMPONENTS TABLE

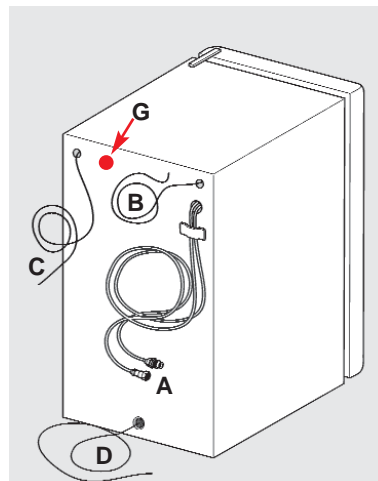
### 2.1 Components description (with hidden evaporator)



#### FRIDGE



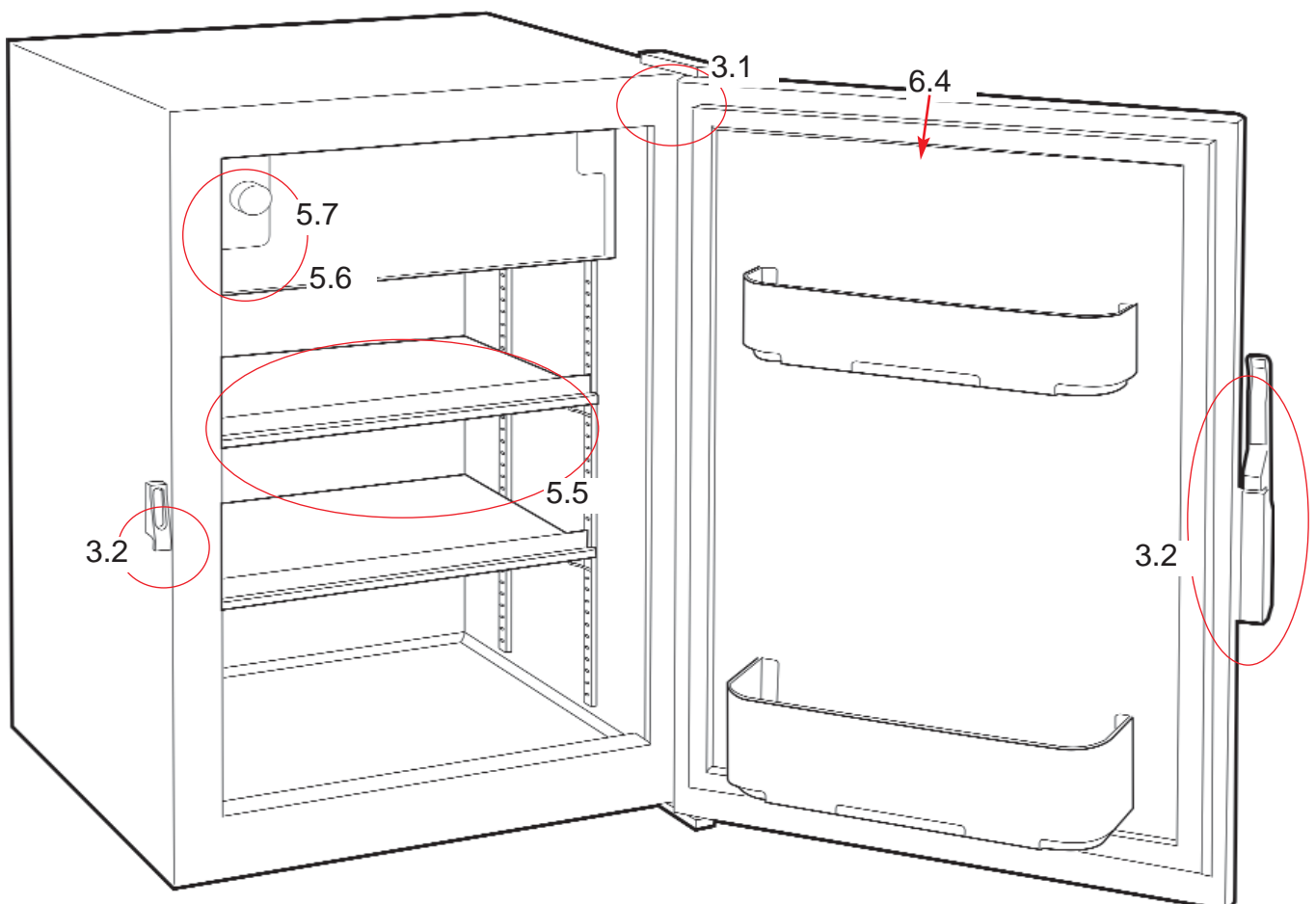
#### FREEZER



- A = RAPID HOOK-UPS
- B = THERMOSTAT
- C = LIGHT
- D = RECHAUFFAGE PORTE (FILO CALOR)
- E = CONDENSATION OUTLET
- G = VOLTAGE WARNING LIGHT

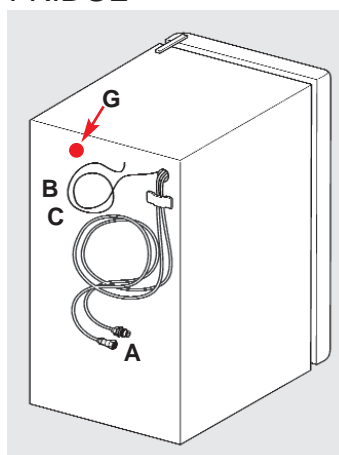
## 2. COMPONENTS TABLE

### 2.2 Components description (with evaporator compartment)



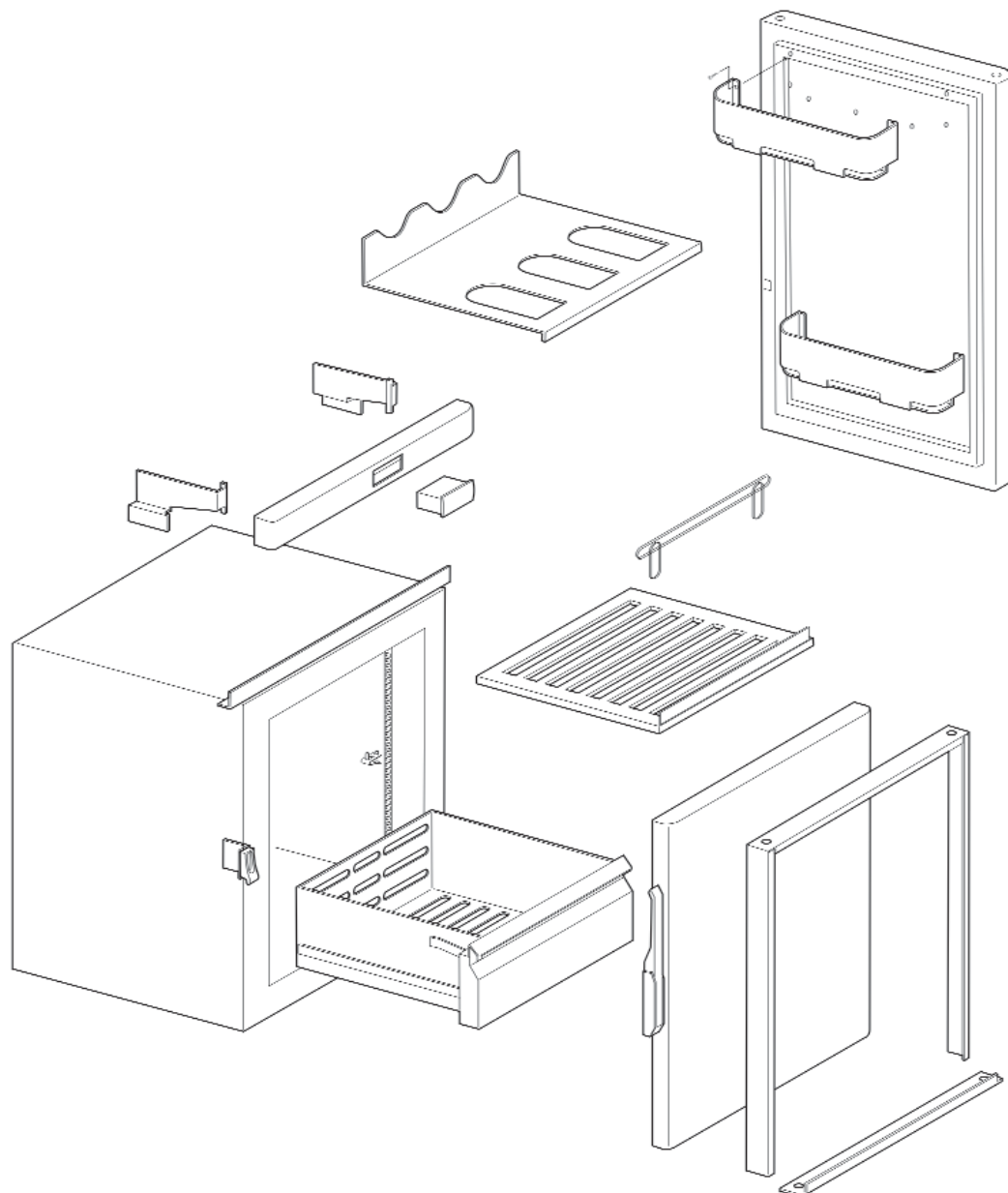
### FRIDGE

- A = RAPID HOOK-UPS
- B = THERMOSTAT
- C = LIGHT
- G = VOLTAGE WARNING LIGHT



## 2. COMPONENTS TABLE

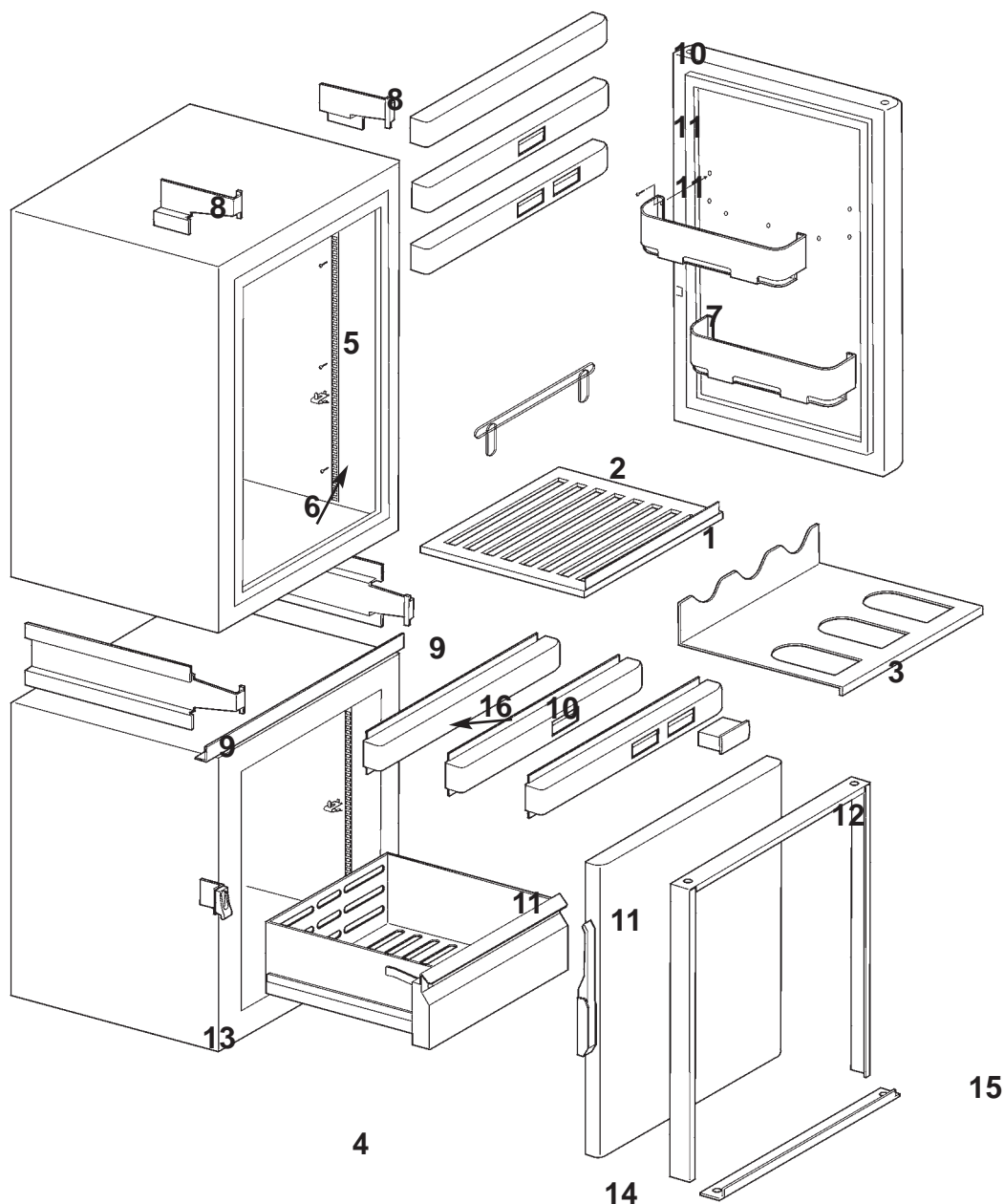
### 2.3 Components table (accessories for one-unit fridges/freezers)



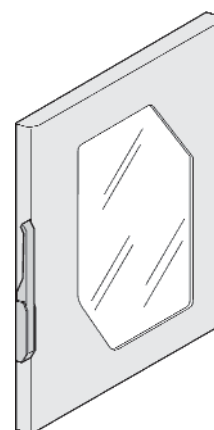
n°	Description		
1	SHELVES GRILLS	9	SPACERS
2	REMOVABLE EDGE	10	RISERS
3	BOTTLES RACK SHELVES	11	THERMOSTAT HOLDERS RISERS
4	DRAWERS	12	EXTERNAL DIGITAL THERMOSTATS
5	INDEXING RACK	13	HANDLE HOOK-UP WITH SUPPORT
6	SHELVES SUPPORTS	14	HANDLE HOOK-UP WITH SUPPORT
7	DOOR BOTTLES RACK	15	DOOR PANELLING KIT
8	RISERS SUPPORTS	16	FRAME KIT

## 2. COMPONENTS TABLE

### 2.3 Components description (accessories for multiple units)



Special glazed door, particularly suitable for wine coolers.



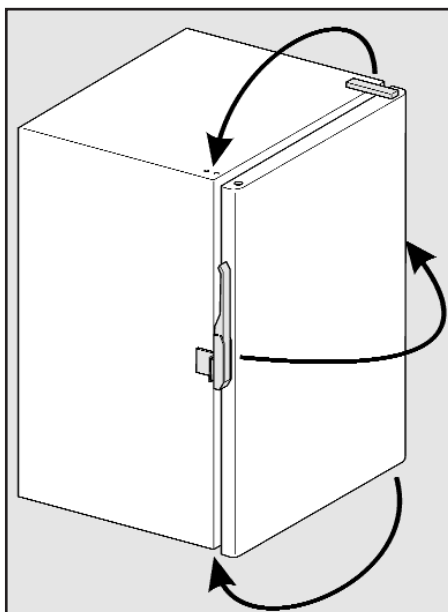
n°	Description		
1	SHELVES GRILLS	9	SPACERS
2	REMOVABLE EDGE	10	RISERS
3	BOTTLES RACK SHELVES	11	THERMOSTAT HOLDERS RISERS
4	DRAWERS	12	EXTERNAL DIGITAL THERMOSTATS
5	INDEXING RACK	13	HANDLE HOOK-UP WITH SUPPORT
6	SHELVES SUPPORTS	14	HANDLE HOOK-UP WITH SUPPORT
7	DOOR BOTTLES RACK	15	DOOR PANELLING KIT
8	RISERS SUPPORTS	16	FRAME KIT

### 3. INSTALLATION

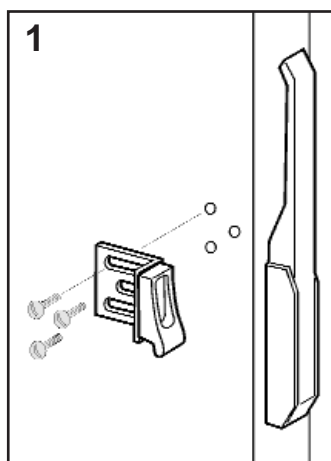
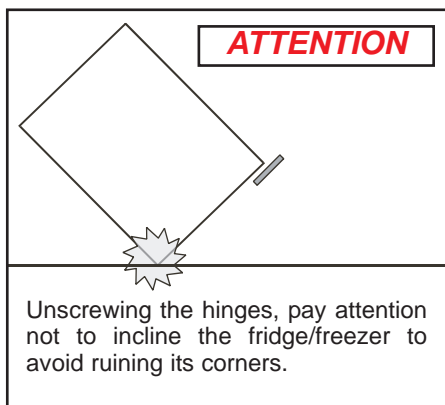
#### 3.1 Doors/hinges

IF IT IS NECESSARY FOR INSTALLATION EXIGENCIES TO CHANGE THE OPENING, READ WITH GREAT ATTENTION THE FOLLOWING INSTRUCTIONS.

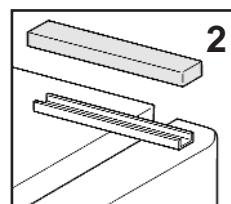
#### HINGE AND HANDLE REVERSAL



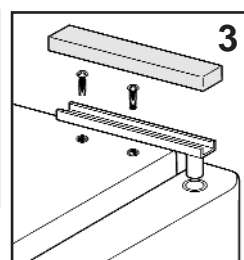
**IMPORTANT:** There are hinges both at the top and at the bottom.



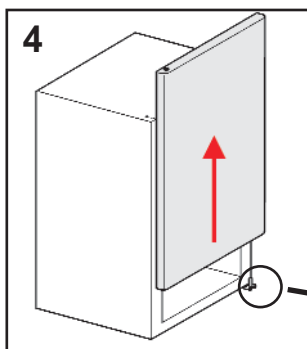
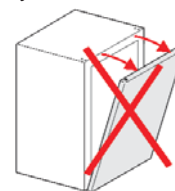
First of all, unscrew the handle from the door and from its support. Then unscrew the corresponding handle hook-up on the box door side.



Release the hinge plastic cover.

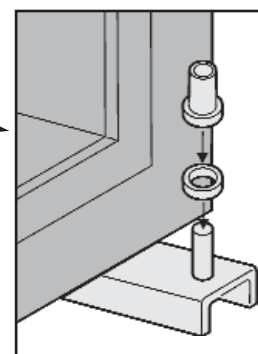


Unscrew the hinge screws on the cabinet top. Removing the hinge, pay attention to the door flexion. Keep it closed until the hinge pin has been unhooked. **DON'T FLEX BACK THE DOOR.**



DURING THE DISMOUNTING, PAY ATTENTION NOT TO LOSE THE RINGLETS ON THE INFERIOR HINGE. HOOK THE DOOR PUTTING THE RINGLETS AS WE CAN SEE IN THE PICTURE.

After having unscrewed the door, screw the hinges on the opposite side (following the inverted dismantling instructions). First of all, fasten the inferior hinge, then hook the door and finally fasten the superior hinge. Hook the handle to the fridge/freezer, Follow the instructions on page 7.



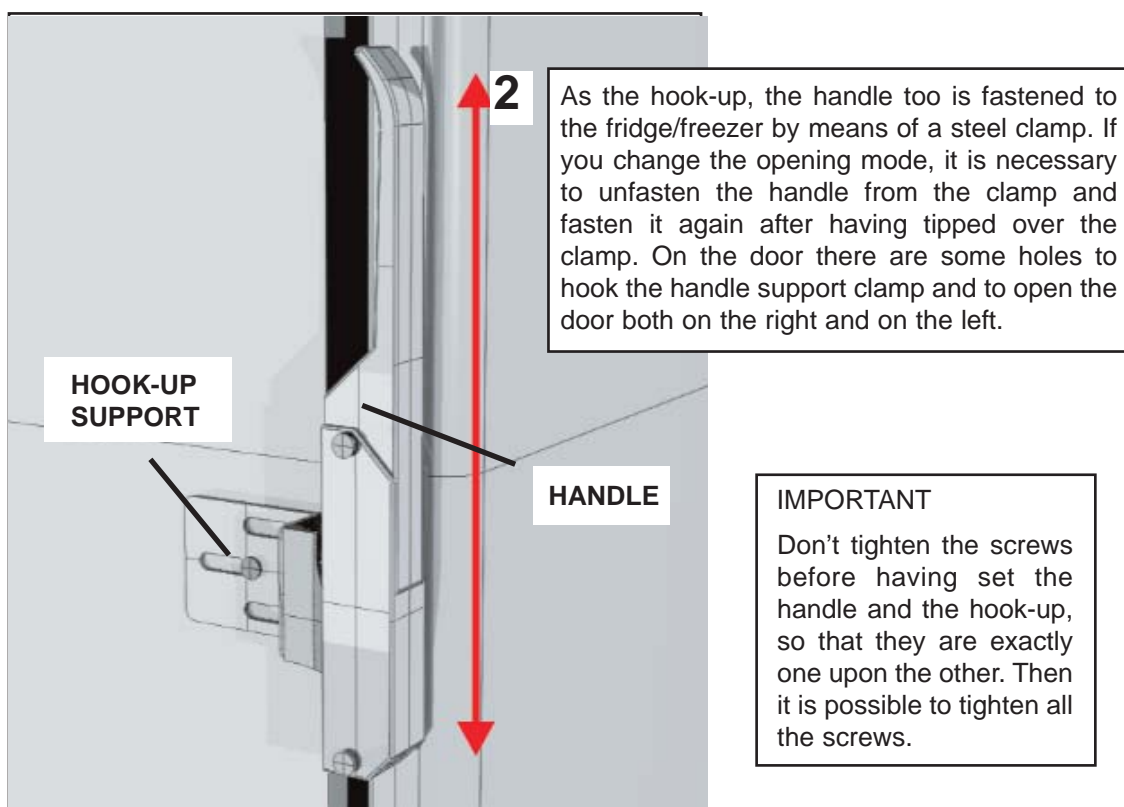
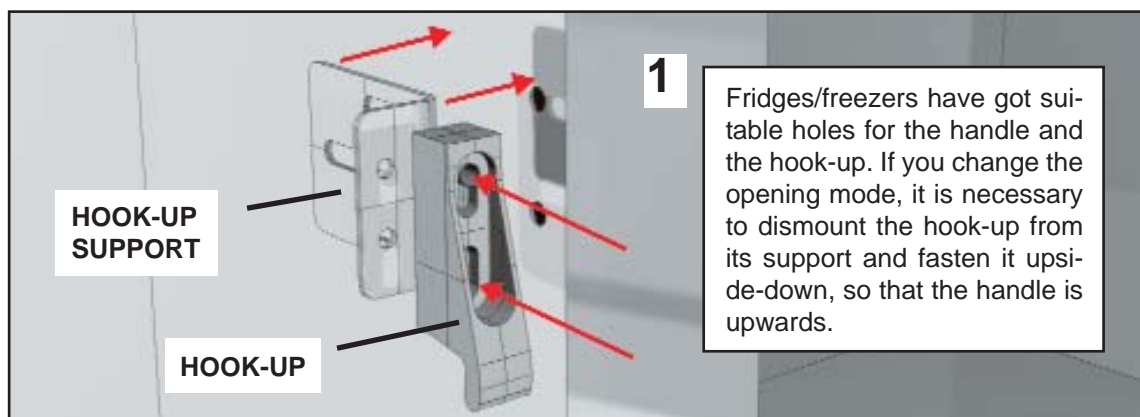
After having hooked the handle, adjust the door. Make sure that all screws are tightened and then screw the plastic cover.



### 3. INSTALLATION

#### 3.2 Doors/handles

##### HANDLE HOOK-UP AND SETTING



##### Handle setting

It is very important that the handle is exactly upon its hook-up: on the contrary the good functioning of the fastening could be impaired and some components could break.

### 3. INSTALLATION

#### 3.3 Measures

Bulk measures have been calculated counting in also eventual bulges due to the following objects:

**feet: 25 mm**

**handle hook-up: 5 mm**

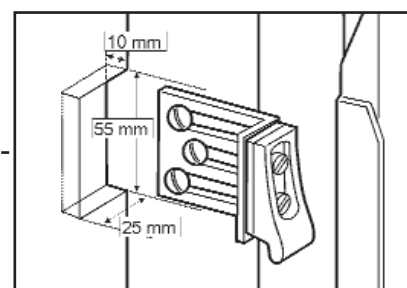
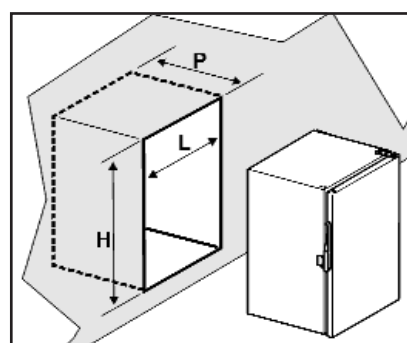
**hinge: 10 mm**

**screws bulges: 3 mm**

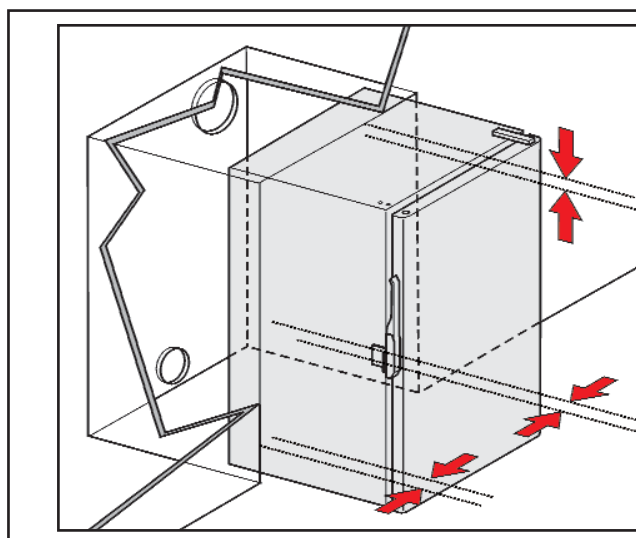
To locate the fridge/freezer, consider the following bulk measures for the different models.

#### Bulk measures

model/litres			
FRIDGE	L=length / mm	P=depth / mm	A=height / mm
42	400	342	545
80	490	415	635
115	500	465	875
130	500	510	780
160	565	530	875
180	500	465	1035
FREEZER			
60	500	515	875
80	550	560	780
90	565	580	740
110	565	580	875
WINE COOLERS			
115	500	515	875
130	550	560	780
160	565	580	875



**1** To locate the fridge/freezer you must consider that the handle hook-up must be fastened in a niche as in the picture on the right.



**2** Because of the difference in temperature between inside and outside the cabinet it is necessary to let some space (for all sides) between the fridge/freezer walls and the walls of the surrounding pieces of furniture, it must be located between. *(Don't remove feet!)\**

The space lack for the air circulation can cause condensation, that in the worst case can get rot the eventual wood or cause mould on fibreglass surfaces.

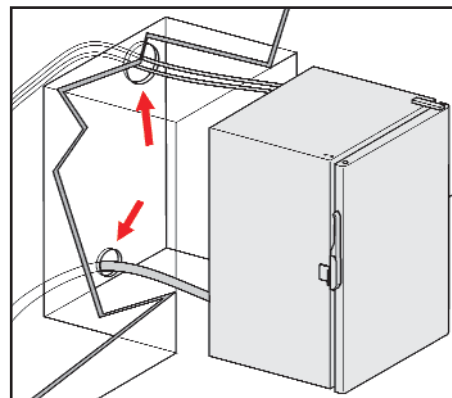
*\*If you must remove feet because of installation exigencies, it is necessary to create some space for the air circulation between the cabinet and the bearing plane.*

### 3. INSTALLATION

#### 3.3 Measures

To locate the fridge/freezer, you must consider not only the bulk measures on page 9 (and in the table 3.5 on pages 11-12) but also the holes for the electrical connection wires and for the eventual condensation outlet. Since precharged pipes protude from the box, it is necessary a respect area: avoid sharp bends (their radius must be superior to 50 mm).

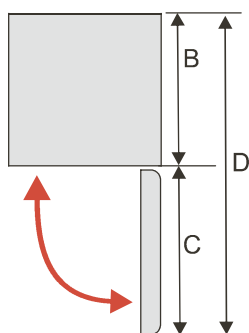
During the fridge/freezer installation, for its maintenance, it is **IMPORTANT** to make as easy as possible the accessibility to connections, unions and waste pipes.



#### Respect area for an easy use

Locating the fridge/freezer, it is necessary to respect the surrounding area to open completely the door and so eventually drawers and to execute easily all operations inside.

#### Respect area



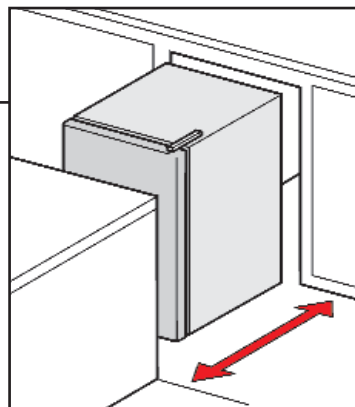
Model (litres)			
FRIDGE	C / mm	B / mm	D / mm
42	400	342	792
80	490	415	955
115	500	465	1015
130	500	510	1060
160	565	530	1145
180	500	465	1015
FREEZER			
60	500	515	1065
80	550	560	1160
90	565	580	1195
110	565	580	1195
WINE COOLERS			
115	500	515	1065
130	550	560	1160
160	565	580	1195

To locate the fridge/freezer you must consider the bulk measures on page 9, corresponding to the chosen cabinet.

#### IMPORTANT

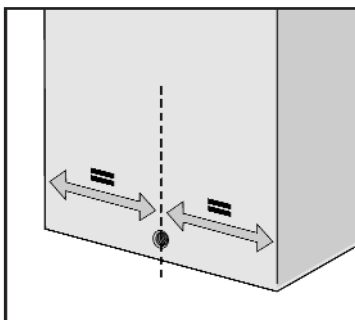
Mounting instructions:  
The fridge/freezer must be located easily.

Moving it, it is better to keep its protection and pay any-way great attention. If necessary, take off the door.



### 3. INSTALLATION

#### 3.4 Condensation outlet

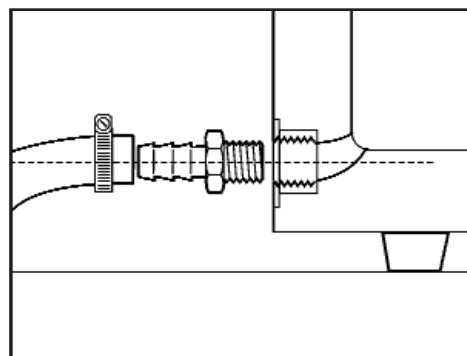


Comprehensive view and position of the condensation outlet hole

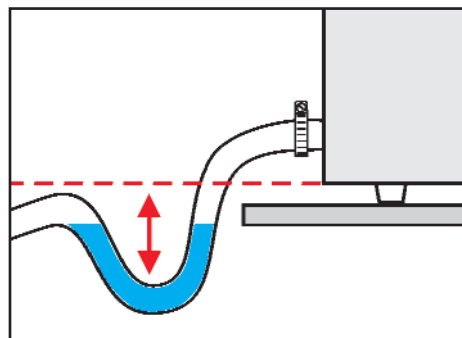
All fridges/freezers of the Stainless Steel series have got the condensation outlet on the back side.

(as in the picture on the left)

- 1 To the condensation outlet you must fasten a curve rubber holder (Cod. M68995) and connect a pipe with a stainless steel clamp (since the fridge causes humidity all around, pay attention to materials in contact with it).



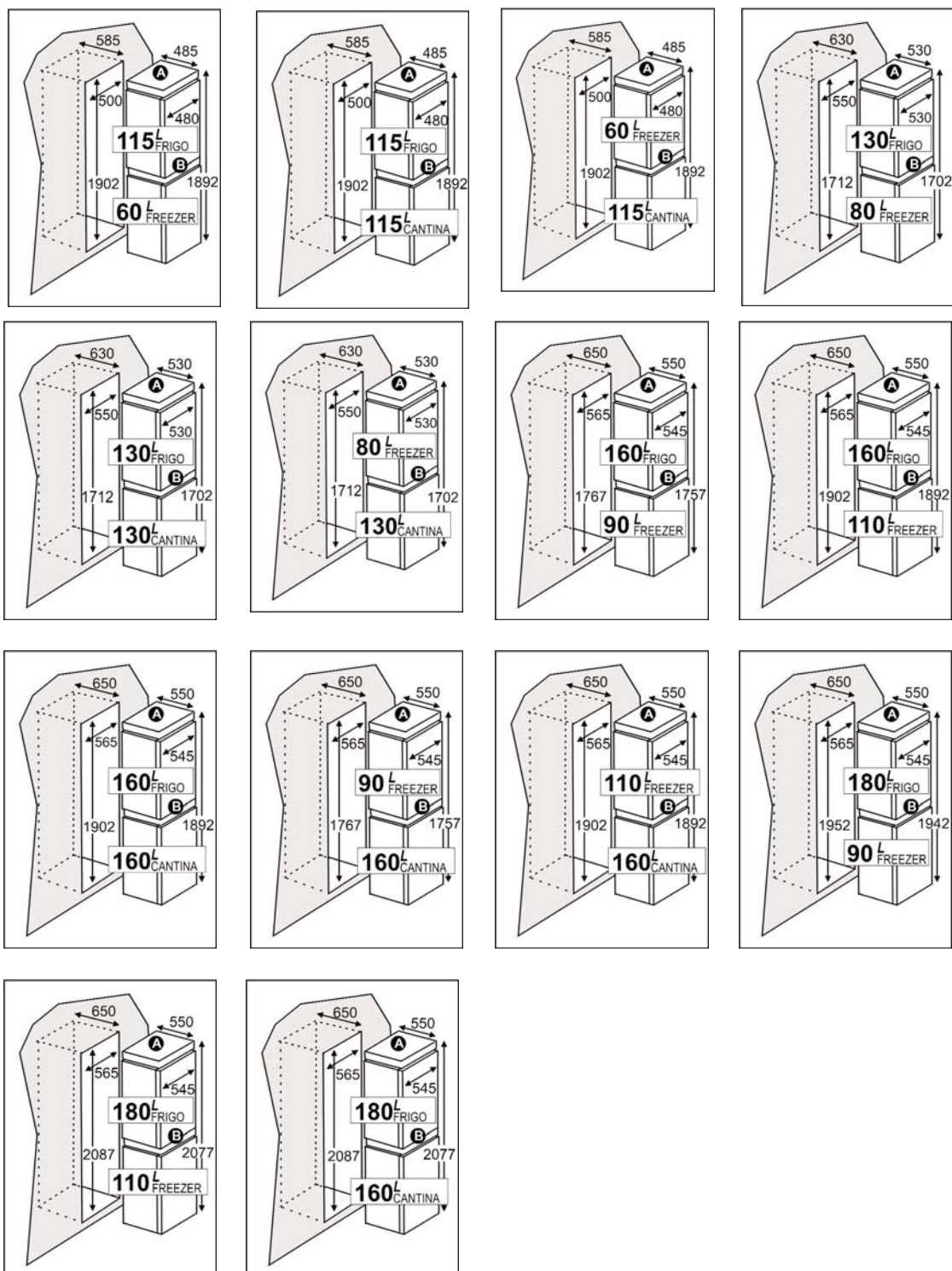
- 2 To avoid unpleasant smells coming from condensation trays go into the fridge/freezer, installing the condensation outlet pipe, it is necessary to create a syphon below the fridge/freezer level.
- 3 Pay attention to the pipe position. Locating the box in the chosen position, don't crush or bend in a n anomalous way the pipe to maintain it functional.
- 4 Check also that the condensation outlet drains correctly, pouring a congrous quantity of water into the stainless steel cabinet when it is located and before switching it on.



### 3. INSTALLATION

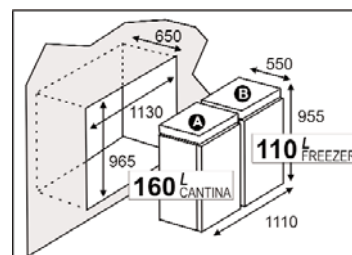
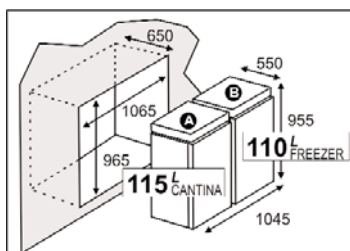
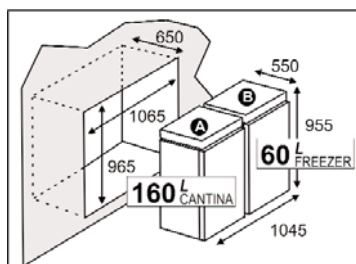
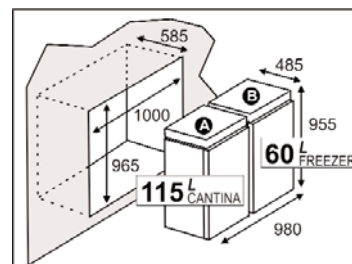
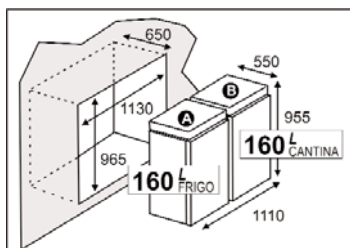
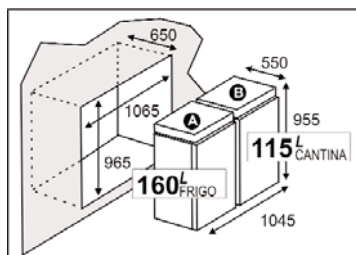
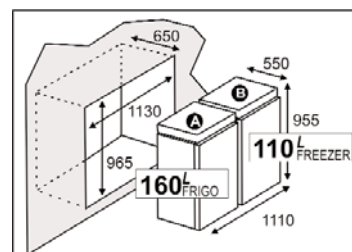
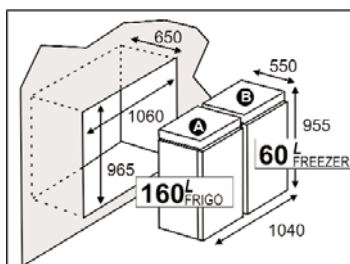
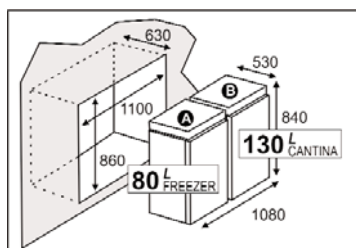
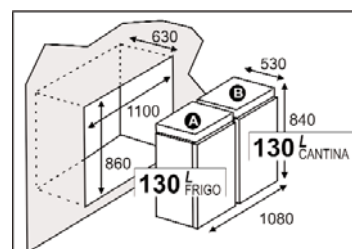
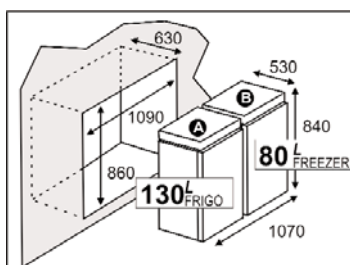
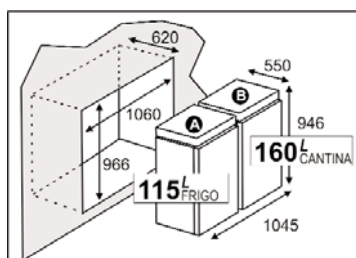
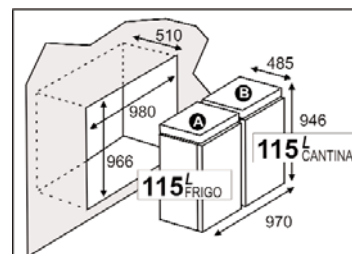
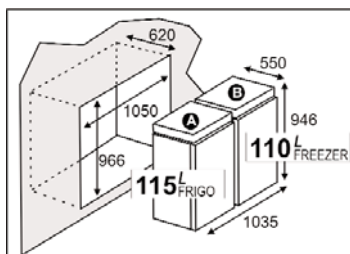
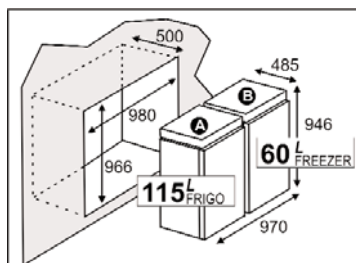
#### 3.5 Multiple measures

Column disposition of the stainless steel boxes in the different compatible and advisable models with intermediate supports for control display in the centre and at the top (line 1) or only in the centre (line 2).



### 3. INSTALLATION

Horizontal disposition of the stainless steel boxes in the different compatible and advisable models with the intermediate supports for the control display on the boxes.



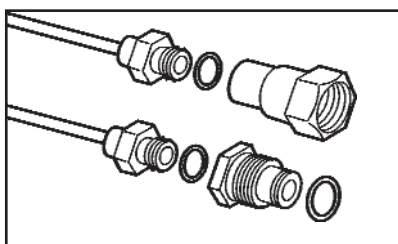
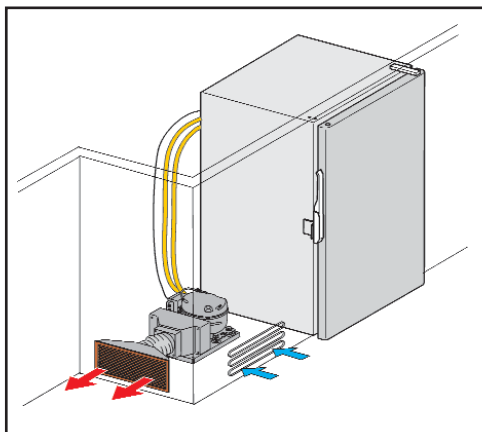


### 3. INSTALLATION

#### 3.6 Connection to the system / compatibility

Refrigerating systems specifications

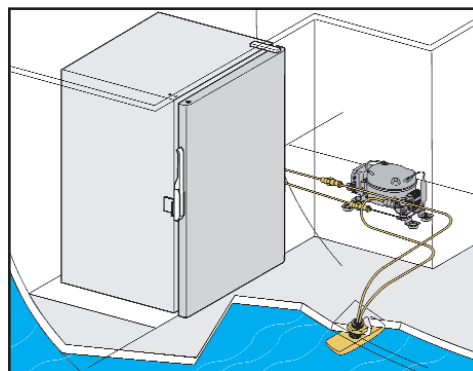
##### AIR REFRIGERATING SYSTEM



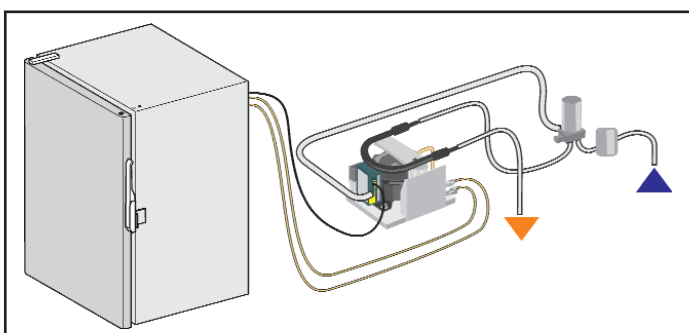
The connection to the compressor unit is easier thanks to the rapid couplings which must not be soldered. All pipes with rapid couplings are already precharged.

##### WATER REFRIGERATING SYSTEM

###### WITH OUT-HULL EXCHANGER



###### WITH SEA WATER PUMP



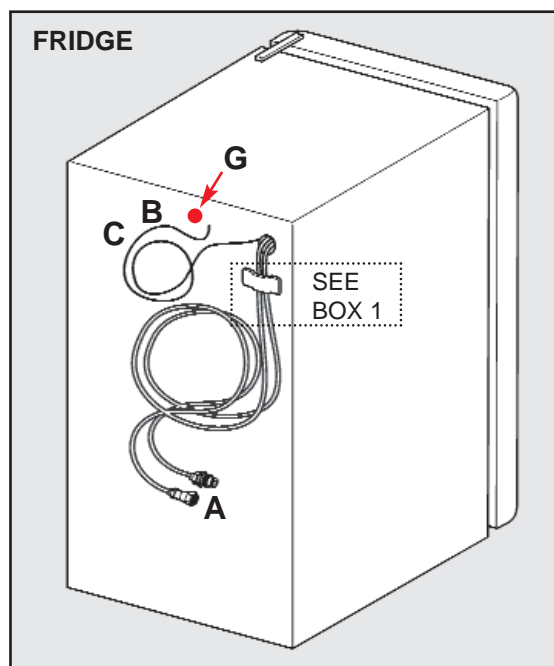
#### Compatibility table

Model (litres)			
<b>fridge</b>	AIR REFRIGERATING SYSTEM	WATER REFRIGERATING SYSTEM	
		WITH OUT-HULL EXCHANGER	WITH SEA WATER PUMP
<b>42</b>	MADRID 35 F; PARIS 35 F; ROMA 35 F		
<b>80</b>	MADRID 35 F; PARIS 35 F; ROMA 35 F		
<b>115</b>	ELBA 35 F; CAPRI 35 F		
<b>130</b>	ELBA 35 F; CAPRI 35 F		
<b>160</b>	ELBA 35 F; CAPRI 35 F		
<b>180</b>	ELBA 35 F; CAPRI 35 F	SUPERFRIGOMATIC K 50 F	SUPERFRIGOMATIC W 50 F
<b>freezer</b>			
<b>60</b>	FRIGOMATIC AH 35 F; FRIGOMATIC AV 35 F; FRIGOMATIC CAPRI 50 F; AHL 35 F	FRIGOMATIC K 35 F	FRIGOMATIC W 35 F
<b>80</b>	FRIGOMATIC AH 35 F; FRIGOMATIC AV 35 F; FRIGOMATIC CAPRI 50 F; AHL 35 F	FRIGOMATIC K 35 F	FRIGOMATIC W 35 F
<b>90</b>		FRIGOMATIC K 50	FRIGOMATIC W 50
<b>110</b>		FRIGOMATIC K 50	FRIGOMATIC W 50
<b>wine coolers</b>			
<b>115</b>	ELABA 35 F; CAPRI 35 F		
<b>130</b>	ELBA 35 F; CAPRI 35 F		
<b>160</b>	ELBA 35 F; CAPRI 35 F	SUPERFRIGOMATIC K 50 F	SUPERFRIGOMATIC W 50 F

### 3. INSTALLATION

#### 3.7 Fridge/freezer - compressor connection

##### CONNECTIONS FOR CABINETS OF MS SERIES WITH EVAPORATOR COMPARTMENT AND CONDENSATION TRAY



- A = RAPID HOOK-UPS
- B = THERMOSTAT
- C = LIGHT
- D = RECHAUFFAGE PORTE (FILO CALOR)
- E = CONDENSATION OUTLET
- G = VOLTAGE WARNING LIGHT

To install a fridge/freezer with evaporator compartment and condensation tray, it is necessary to connect:

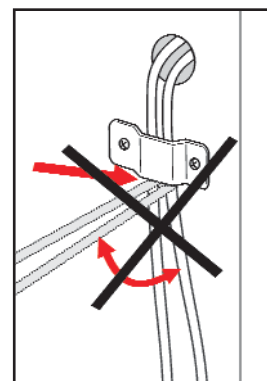
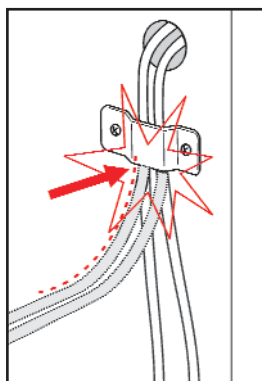
- 1) the pipes to the compressor unit (A)
- 2) the thermostat wires (B)
- 3) the internal light wires (C - 12 or 24 V)

BOX 1

#### ATTENTION

PAY ATTENTION BENDING PIPES (AS WE CAN SEE IN THE PICTURE). AVOID ANGLES AND BEND PIPES FORMING A WIDE RADIUS.

A SHARP BEND COULD IMPAIR THE GOOD FUNCTIONING OF THE EVAPORATOR.

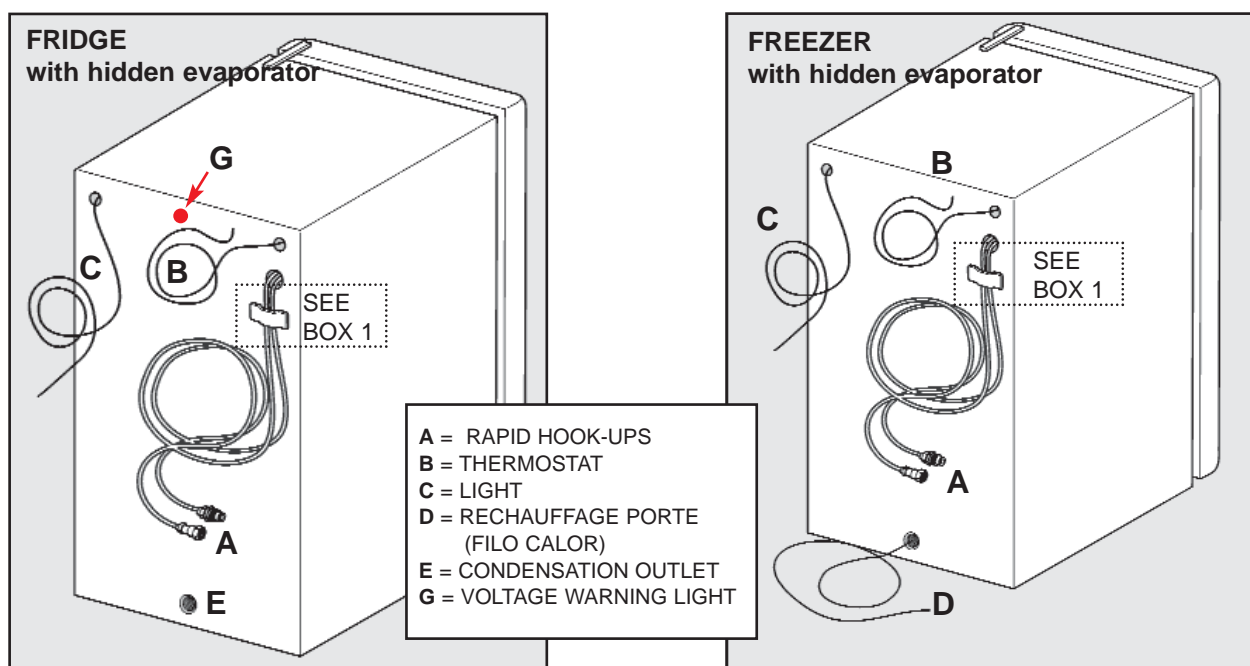




### 3. INSTALLATION

#### 3.7 Fridge/freezer - compressor connection

##### CONNECTIONS FOR FRIDGES AND FREEZERS WITH HIDDEN EVAPORATOR



To install a fridge/freezer with hidden evaporator, it is necessary to connect:

##### FOR THE FRIDGE

- 1) the pipes to the compressor unit (A)
- 2) the thermostat wires (B)
- 3) the internal light wires (C - 12 or 24 V)
- 4) the condensation outlet pipe (E - on page 11)

##### FOR THE FREEZER

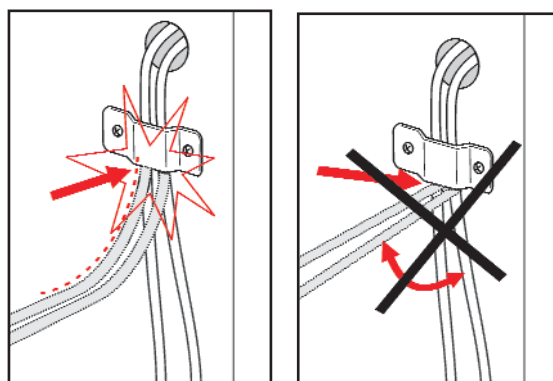
- 1) the pipes to the compressor unit (A)
- 2) the thermostat wires (B)
- 3) the internal light wires (C - 12 or 24 V)
- 4) the FILO CALOR

BOX 1

#### ATTENTION

PAY ATTENTION BENDING PIPES (AS WE CAN SEE IN THE PICTURE). AVOID ANGLES AND BEND PIPES FORMING A WIDE RADIUS.

A SHARP BEND COULD IMPAIR THE GOOD FUNCTIONING OF THE EVAPORATOR.

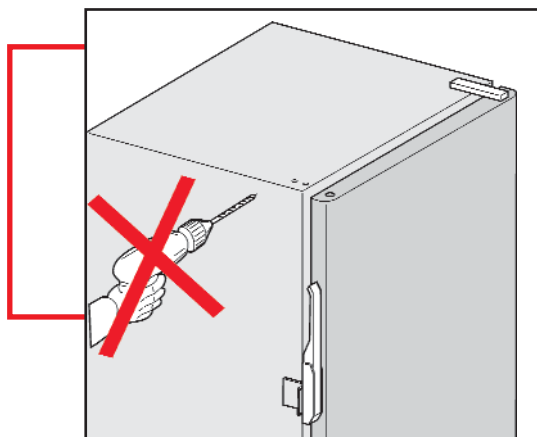
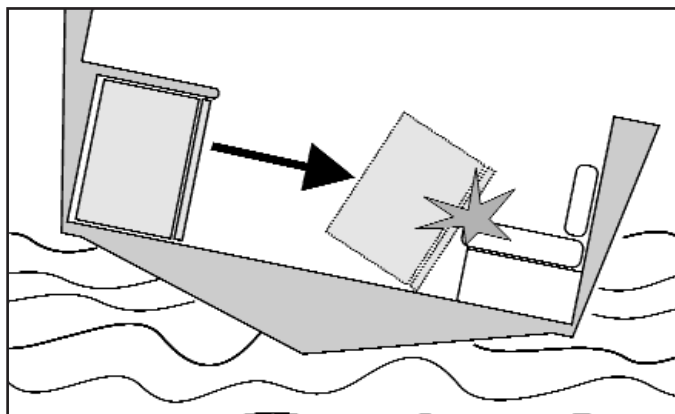


### 3. INSTALLATION

#### 3.8 Fastening

**The Stainless Steel boxes must be fastened to the structure, even if they have a precise position.**

In fact, if the box hasn't been fastened, it could occasionally moves according to the hull movements and even if it doesn't cause immediately any damages, then it could ruin the connection pipes (*break of the connection pipes to the system and detachment of the condensation discharge pipe or of the electrical connections*).



**DON'T DRILL ANY HOLE INTO THE BOX.  
YOU COULD IMPAIR IRREMEADIABLY  
THE EVAPORATOR.**

**ALL NECESSARY HOLES HAVE ALREADY BEEN  
ARRANGED WITH RINGLETS.**

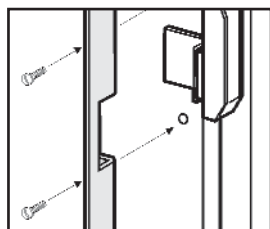
### 3. INSTALLATION

#### 3.9 Fastening with frame kit

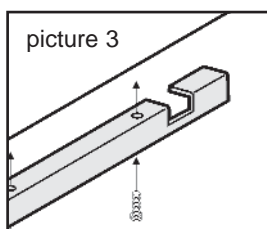
##### How to fasten the box with the frame kit

On the box walls there are some holes to fasten stainless steel profiles (picture 4), that fit perfectly the cabinet in the chosen seat (picture 4).

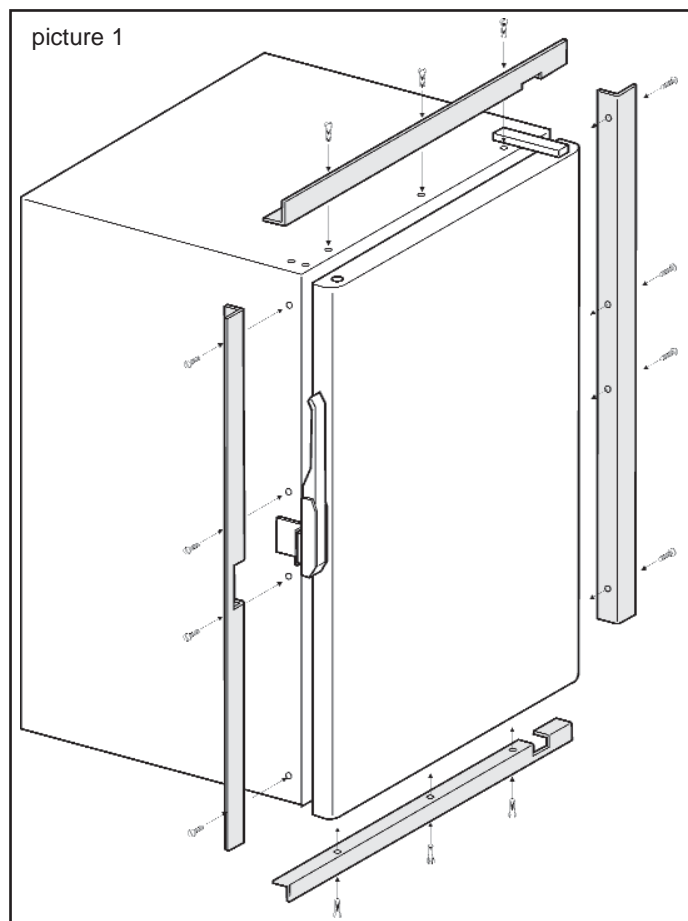
On the profiles there are some holes to fix them on the box (the kit includes screws). Pay attention to the hinges and the handle position since the profiles have their own join seats (pictures 2 and 3).



picture 2



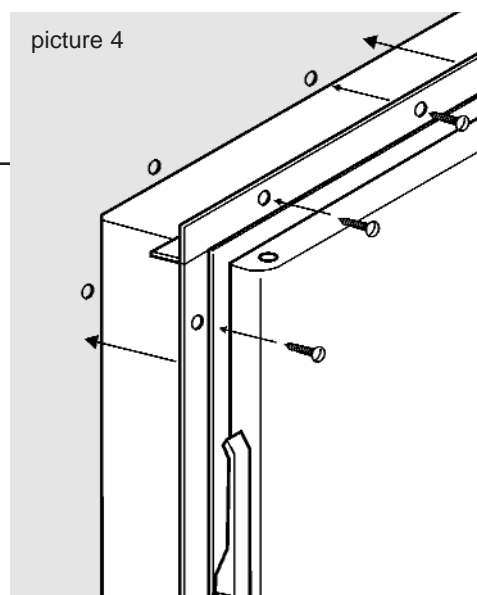
picture 3



picture 1

If you want to fasten the box using the frames, it is necessary to drill into its walls some holes, as you can see in the picture.

You can drill some holes only before mounting the frames. Then you must consider also the material they must be fasten to and the screws head.

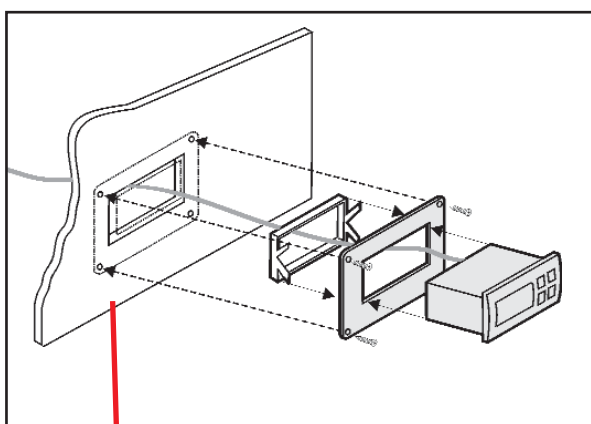
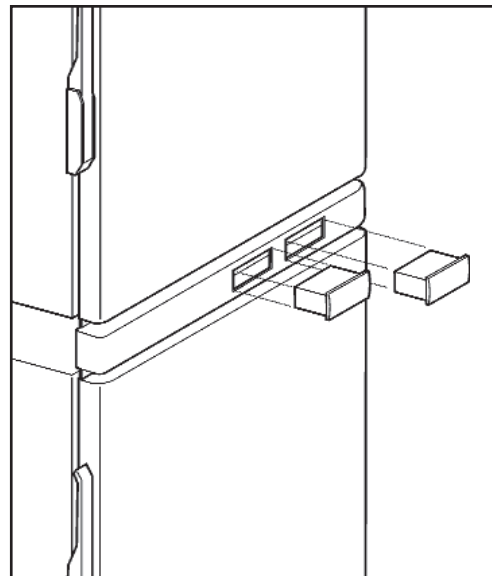
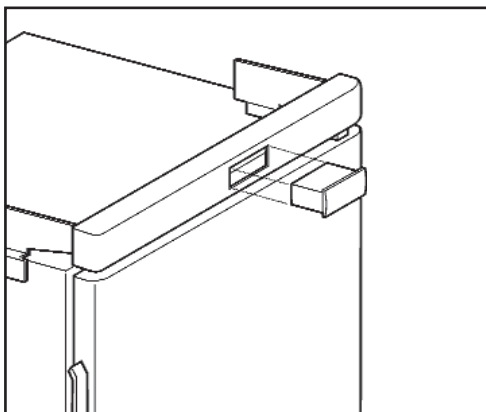


picture 4

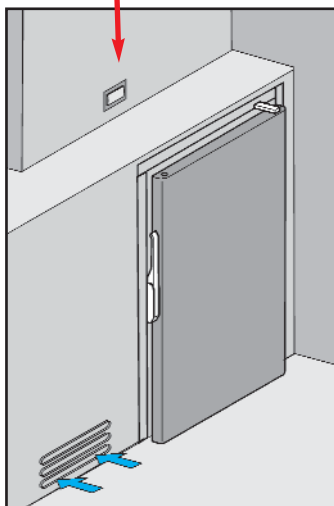
### 3. INSTALLATION

#### 3.11 Optional external thermostat

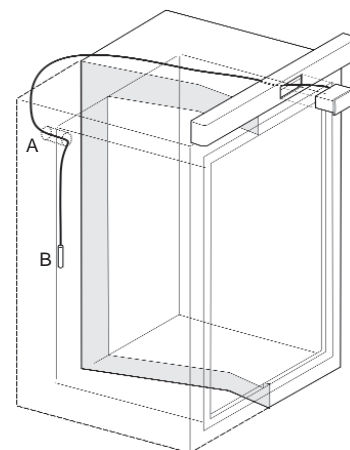
It is possible to install digital thermostats for fridges and freezers. You can insert these thermostats in the risers (as you can see in the picture) if it is a one-unit or in the risers/spacers if it is a multiple unit, composed by fridge and freezer (see "Components table" on page 5-6).



The digital thermostat has not to be installed near the box. In this case you can fix it on the wall, as you can see in the picture, through a stainless steel frame.



You must put the bulb of the digital thermostat in the fridge/freezer (A). The wire must pass into the hole of the box back (B). Then it must follow the internal edge line. The correct position is at half height. The bulb must not come into contact with the walls and the food inside. The wire must be fastened by an aluminium adhesive tape or by some silicone. It is necessary to seal the hole.



### 3. INSTALLATION

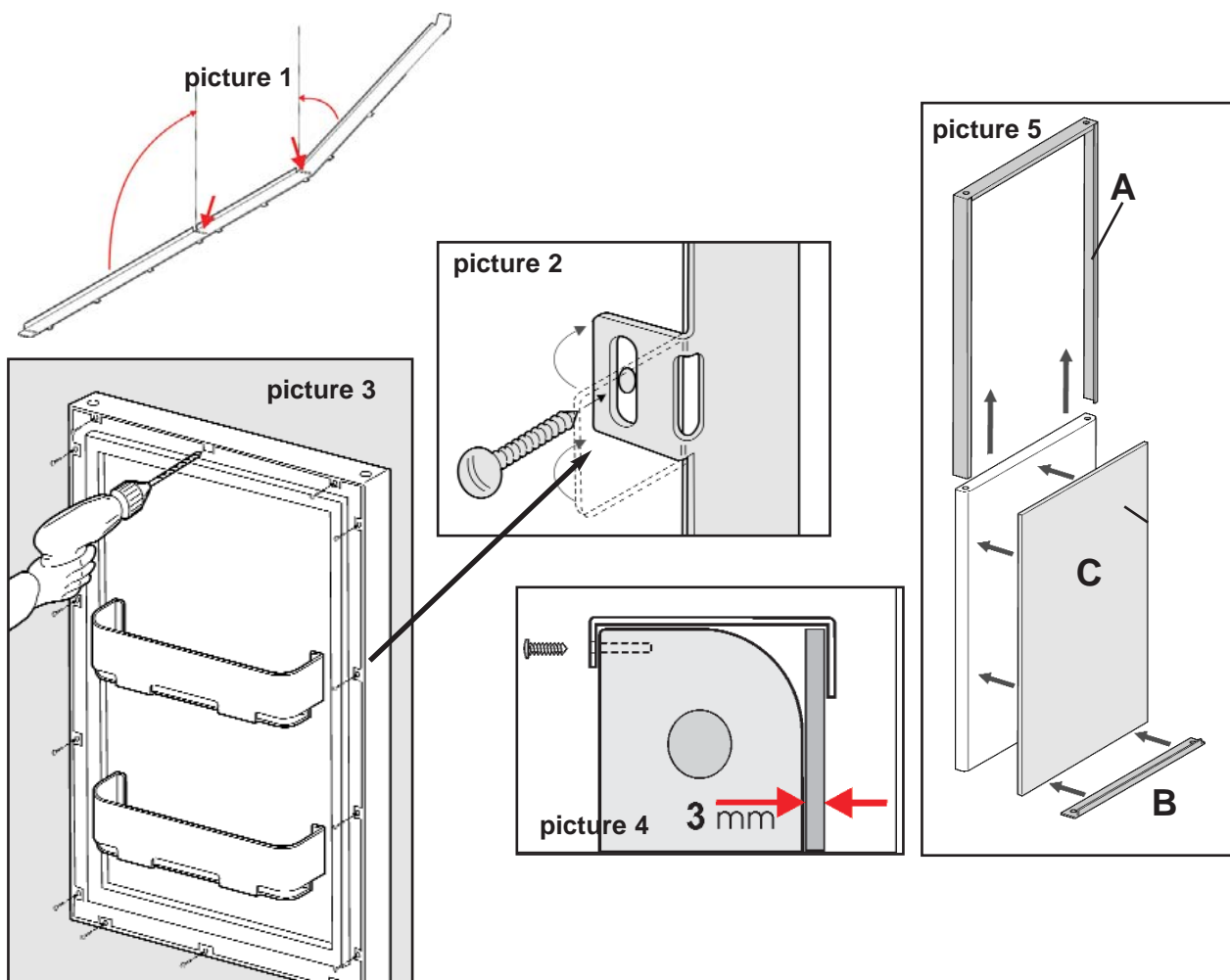
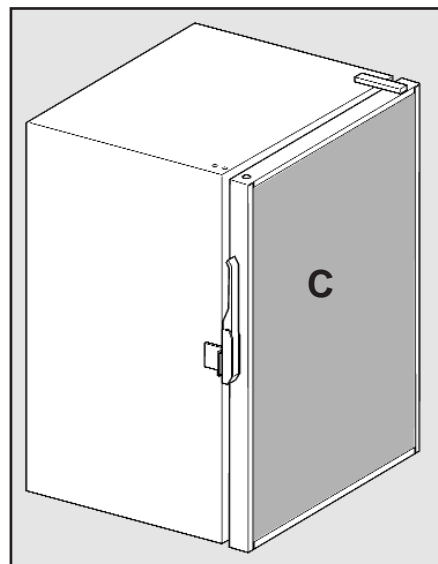
#### 3.12 Door with panel

It is possible to panel both the fridge and the freezer door.

The kit includes one single profile to be bent.

To fasten them, follow these instructions:

- 1** - take down the door (*instructions on page 7 - 3.1*);
- 2** - bend the profile along the arranged line (*picture 1*);
- 3** - bend inside tongues to 90° (*picture 2*);
- 4** - drill a hole into the door inside next to the tongues (*picture 3*);
- 5** - locate the panel (3 mm thick) (*picture 4*);
- 6** - locate the panel C and the frame composed by the two elements: A and B (*picture 5*);
- 7** - tighten the screws;
- 8** - take up the door (*instructions on page 7 - 3.1*)



## 4. GOOD FUNCTIONING CHECK

### 4.1 Check

To execute the check, after having made all the connections, both the electrical connections and the connections to the pipes, switch on the fridge/freezer and set the thermostat to half way between maximum and minimum: within a minute the compressor will start automatically.

#### CHECK PHASES

1

Make sure that all the connections have been correctly made.

2

Press the switch on, that is on the main electrical panel or elsewhere according to the installation.

3

Set the thermostat to ON.

4

If the connections have been correctly made, within a minute the compressor will start and the fridge/freezer will cool down.

## 5. USE INSTRUCTIONS

### 5.1 Switching on

To switch on the fridge/freezer, check that the power is available and turn the thermostat to ON to start the compressor. After few minutes the fridge/freezer will cool down. Then wait for 20 minutes before putting the food inside.

### 5.2 Switching off (no use)

If you don't use the equipment for a long time, follow these instructions:

- cut off the power to the fridge/freezer circuit;
- take off the foods from the fridge/freezer and defrost the latter, emptying frequently the condensation tray, and clean it.

Then, don't close the door to avoid mould and bad smells.

### 5.3 Temperature regulation

To regulate the temperature in the fridge/freezer, turn the thermostat to the desired temperature and wait for some minutes until it is reached. If it is the first switching on after a long period of no use, wait for some minutes and check that the fridge/freezer is cooling down.



### 5.4 Condensation tray emptying

In the models equipped with the tray, while the fridge/freezer is operating, it is advisable to check at least once a week if there is eventually water in the tray. In this case, empty it and mop it well to avoid mould and bad smells.

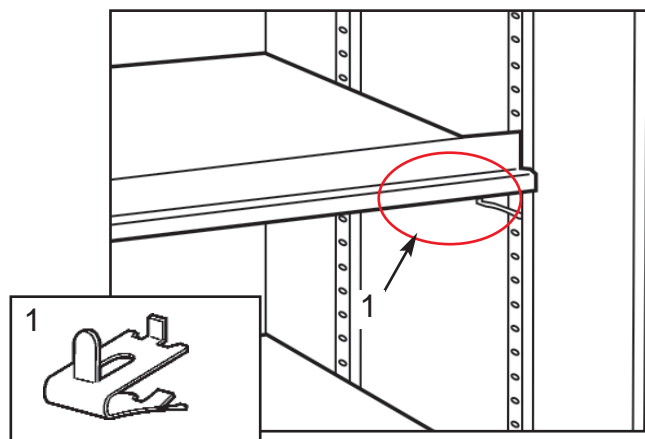


## 5. USE INSTRUCTIONS

### 5.5 Shelves regulation

To regulate the shelves in the box there are four indexing racks (two for each sides), to which must be fastened the shelves supports (1). It is necessary to fasten the four supports at the same level, so that the shelf is perfectly horizontal.

To hook the supports to the grill look at the picture on the right and repeat the operation for each support.



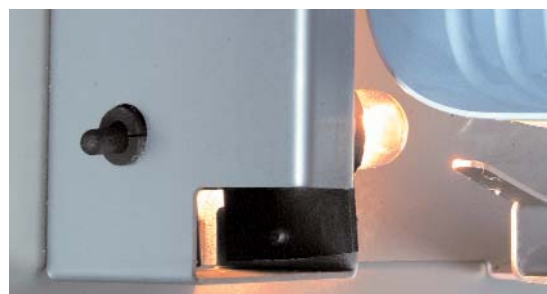
### 5.6 Light bulb change

The light bulb is in a stainless steel shell at the top on the right. On the internal side there is the switching on button. To change the light bulb, unscrew it and change it with a new one of the same model.  
(Switching off the fridge/freezer before changing the light bulb)

**Check the light bulb voltage:**

If it is **12 V**, use the light bulb (Cod. G270423)

If it is **24 V**, use the light bulb (Cod. G270425)



### 5.7 Cleaning

Before cleaning the fridge/freezer, it is necessary to cut off the power.

You must clean the fridge/freezer only with warm water, using a soft cloth.

After having cleaned it, it is possible to give again the power to the fridge/freezer.



## 6. PERIODICAL MAINTENANCE

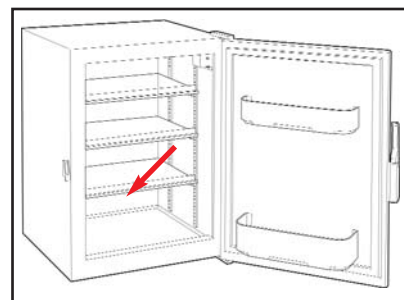
### 6.1 Defrosting

We suggest to defrost the freezer or the deep-frozen foods compartment when the ice is more than 4-5 mm thick. Before defrosting it, it is necessary to empty the deep-frozen foods compartment. Make sure that the condensation tray doesn't contain water and during the defrosting pay attention that it doesn't fill up.

### 6.2 Outlet check

To check that the outlet discharge drains correctly, pour some water in the hole at the bottom by the fridge/freezer back wall: the water should flow fluently. On the contrary, it is necessary to clean the clogged outlet.

In the fridges with evaporator compartment there is no condensation outlet, since there is a tray just below the evaporator to collect the condensation. It is necessary to empty the tray before it fills up completely (see 6.1).



### 6.3 Electrical system check

It is advisable to check periodically both the fridge/freezer and the compressor electrical circuit to guarantee the system safety. In fact, a short circuit could damage the compressor electrical system and cause a fire on the boat.

### 6.4 Seals check

When the fridge/freezer is off, it is advisable to check sometimes seals and clamps, used to hook the condensation outlet pipes.

## **6. PERIODICAL MAINTENANCE**

---

### **6.5 Handle check**

If it is difficult, using the fridge/freezer, to open or close it, we suggest to check the handle and the hook-up alignment, the handle is hooked to, to avoid any damages (see 3.2 on page 7).

It is also useful to check sometimes the handle even if the fridge/freezer door opens and closes easily.

### **6.7 Hinges check**

Check that the hinges screws don't loosen because of the boats vibrations, since they could impair the fridge/freezer opening and closing.

## 7. FOODS PRESERVATION AND PLACING

---

### 7.1 Preservation times table

#### WHAT TO DO

- Open the fridge only if necessary.
- Wrap up cheeses and other odorous foods with the silver paper or put them in food containers.
- Defrost the refrigerating compartment before the ice gets 10 mm thick. Then clean it with a bicarbonate solution by means of a sponge. Rinse and dry carefully.
- When you don't use the fridge/freezer, let it open. If it has a front opening, block the door so that it can't close.

#### WHAT TO AVOID

- Put in the fridge warm foods.
  - Defrost the ice using sharp objects.
  - Put foods in the evaporator compartment without any protection.
  - Clean the fridge using chemical solvents, although diluted in water.
- 

#### HOW TO PLACE FOODS

##### FRIDGE

- Put in the fridge the hermetic packaging.
- Wrap up meat, fish and vegetables, etc....with food paper or put them in food containers.
- Don't cover grills with paper or trays. Keep some distance between foods to let the air circulate.
- Choose different height shelves according to the food preservation temperature: at the top it's warmer; at the bottom it's cooler.

##### FREEZER

- Put the deep-frozen packaged foods in the freezers without taking off their packaging.
- To deep-freeze, divide foods in little portions and wrap up separately each one using food paper. Put them in the most cold compartment area.

Because of power lack and considering the installation specificity, it is better to avoid deep-freezing foods.

The food that must be deep-freeze must not get into contact with the deep-frozen food.

At the freezer bottom, there must be a grill so that deep-frozen foods don't get into contact with the bearing plane., if it doesn't belong to the evaporator.

---

#### ICE CUBES PRODUCTION

- Use the ice tray for the evaporator with its portioned plastic bag (A090900 and A090901).

## 8. TROUBLESHOOTING

### 8.1 Troubleshooting

Before calling an Authorized Assistance Centre, we suggest some checks to solve the most common cases of bad functioning, not directly caused by material defects or installation errors.

If the system wouldn't work after having checked it, call the nearest Frigoboot Authorized Assistance Centre.

To have some information about the nearest Authorized Assistance Centre, call the Veco service (+39.0362.35321) or go to the WEB page [www.frigoboot.it](http://www.frigoboot.it)

#### NOTE:

Wait one minute: there is up to one minute delay between the power ON and the compressor starting. Allow enough time.

#### 8.1 - THE BOX IS TOO COLD OR THE COMPRESSOR RUNS CONTINUOUSLY

8.1.1 - Turn the thermostat clockwise towards 1. If the box is still too cold with thermostat set at 1, then stop the compressor, putting the thermostat to 0 or switching off the fridge switch. Use this switch to make run the compressor for 15 minutes every 1 - 3 hours to keep the box at the normal temperature (+2 / -6). The unit must be checked by a Frigoboot Authorized Service.

#### 8.2 - THE BOX IS NOT COLD ENOUGH ALTHOUGH THE COMPRESSOR RUNS NORMALLY

8.2.1 - Remove any warm food from the box and let it cool down to ambient temperature before storing it again.

8.2.2 - The door must be perfectly closed and the door gaskets must fit perfectly. Nothing must prevent the door gasket to seal.

8.2.3 - Check that there are no obstructions in the compressor air intake and outlet and the condenser is clean.

8.2.4 - When the compressor is running, the fan should run in air-cooled models and the pump should run and the water flow in W models. Otherwise it is necessary to clean the filter.

#### 8.3 - THE COMPRESSOR STARTS BUT STOPS ALMOST IMMEDIATELY AFTERWARDS

8.3.1 - Check the battery charge. If necessary, charge the battery.

8.3.2 - Check that all the connections and the fuse of the battery supply to the Frigomatic are well tightened and not corroded. In winter the compressor temperature should be above 0 °C.

8.3.3 - Disconnect the F terminal from the electronic control. If the compressor runs correctly, check the fan, the pump or the pump relay as the amperage is too high. As soon as you can, the unit should be checked by a Frigoboot Authorized Assistance Centre.

#### 8.4 - THE COMPRESSOR DOESN'T START

8.4.1 - There is a delay between the power ON and the compressor starting. Wait one minute.

8.4.2 - On the electronic control check that the + and - voltage is 12 V (24 V) and the thermostat has been set on 7.