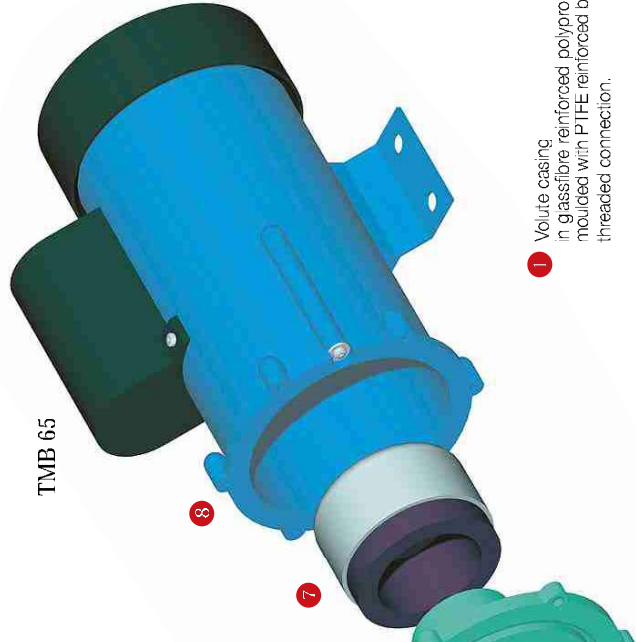


SIMPLE CONSTRUCTION



TMB 20-30



TMB 65

1 Volute casing in glassfibre reinforced polypropylene injected moulded with PTFE reinforced bearing. Hose or threaded connection.

2 Rear casing. Connected by OR gasket to the front casing, it forms the tight chamber of the pump and hosts a PTFE reinforced bearing. The thermoplastic employed are the same as those of the volute casing.

3 OR gasket

4 Impeller. The impeller, with the impeller magnet, is made of GFR/PP with in built ceramic spindle.

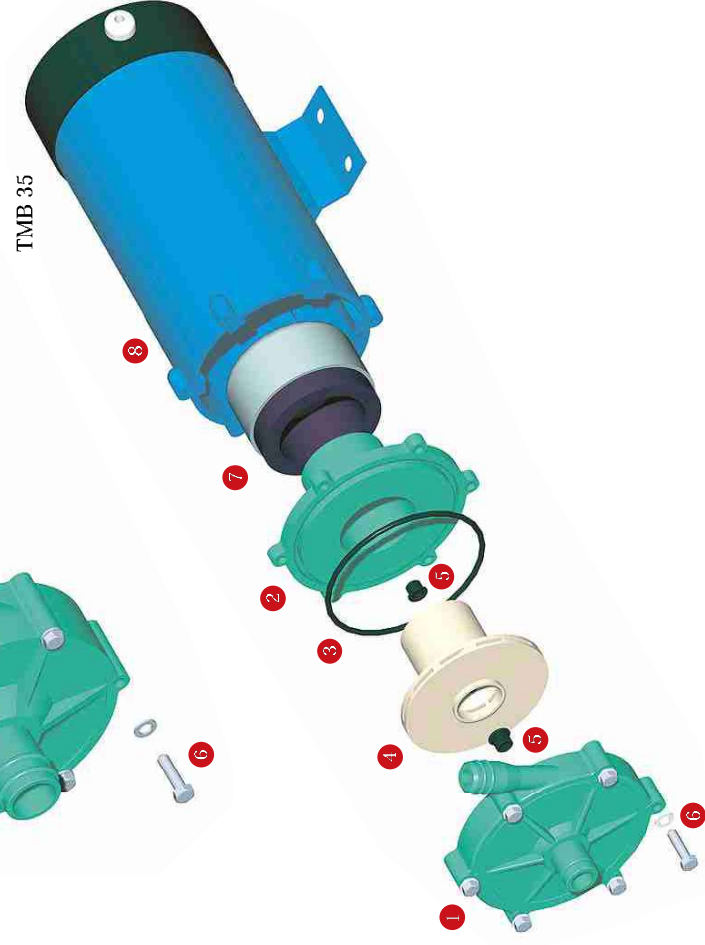
5 Guide bushings

6 Stainless steel screws

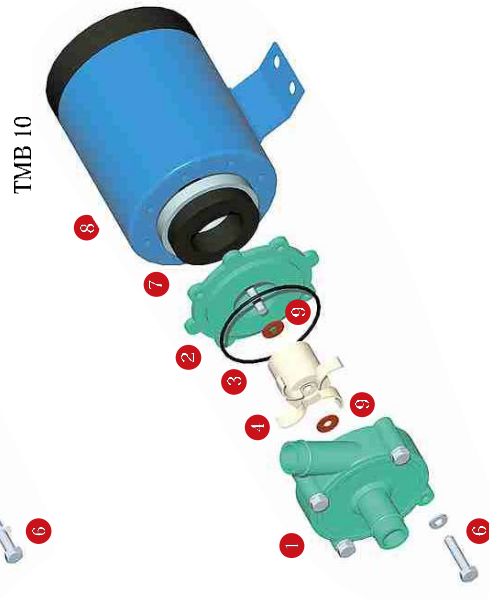
7 Drive magnet with isotropic ferrite magnet encapsulated in aluminium and mounted on metallic drum. The drive magnet revolves outside the casing and drives the impeller magnetically.

8 Electric motor 1-phase 220-240V either 50 or 60Hz. Insulation class E. Enamelled with paint, provided with thermal protector to 120 °C.

9 Thrust bush



TMB 35



TMB 10